

FRONT ELEVATION

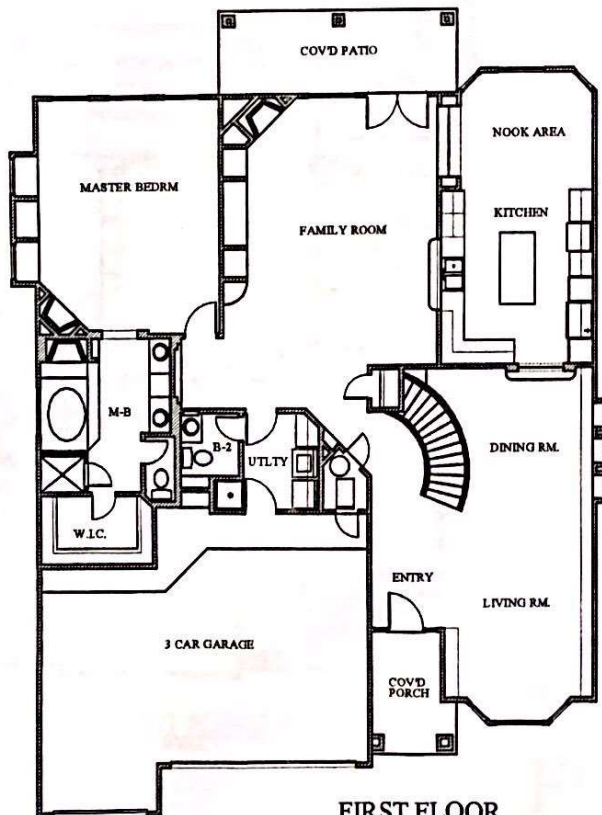
CHRISTINA I

TRIPLE CAR GARAGE, 4 BEDROOMS, LOFT,
2 1/2 BATHROOMS. TILE FLOORS IN THE
ENTRY, KITCHEN, BREAKFAST AREA,
BATHROOMS AND UTILITY ROOM, WITH
ROUNDED DOORS THROUGHOUT.

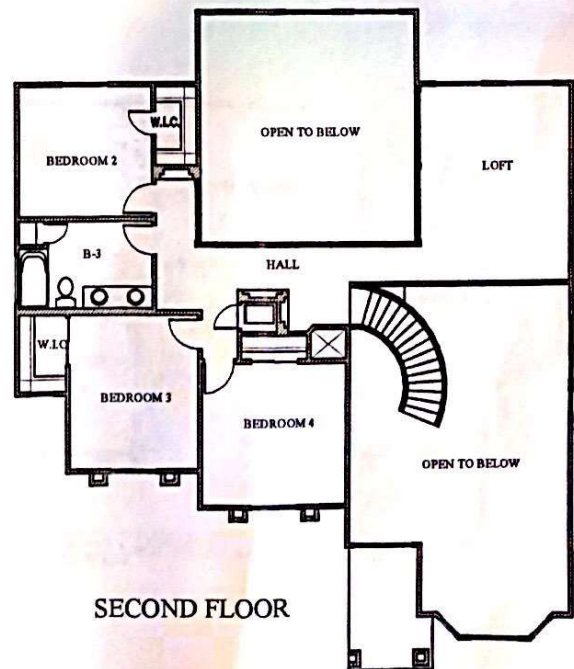
LIVING AREA
3061 SQ.FT.



11601 PELLICANO SUITE C-9
EL PASO, TEXAS 79938
PHONE: (915) 856-7795
FAX: (915) 636-9615



FIRST FLOOR



SECOND FLOOR

STARTING PRICE \$ _____

PRICE SUBJECT TO CHANGE AS PER SUBDIVISION AND LOT
WITHOUT ANY NOTICE. (LANDSCAPING NOT INCLUDED).